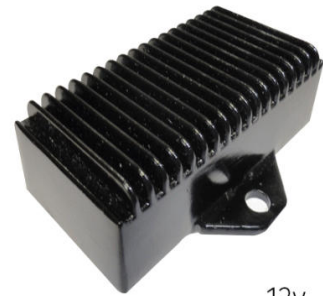


## CA 7055

## 12V Resistor

<b>Working Voltage:</b>	12V
<b>Operational Voltage:</b>	10.8V   13.8V
<b>Power Consumption:</b>	12V: 15.96W
<b>Operational Temperature:</b>	68°C
<b>Base Material:</b>	Aluminium Alloy
<b>Size:</b>	87(W)*45(H)*30(D)mm
<b>ECE Approved:</b>	Reg 10



12v